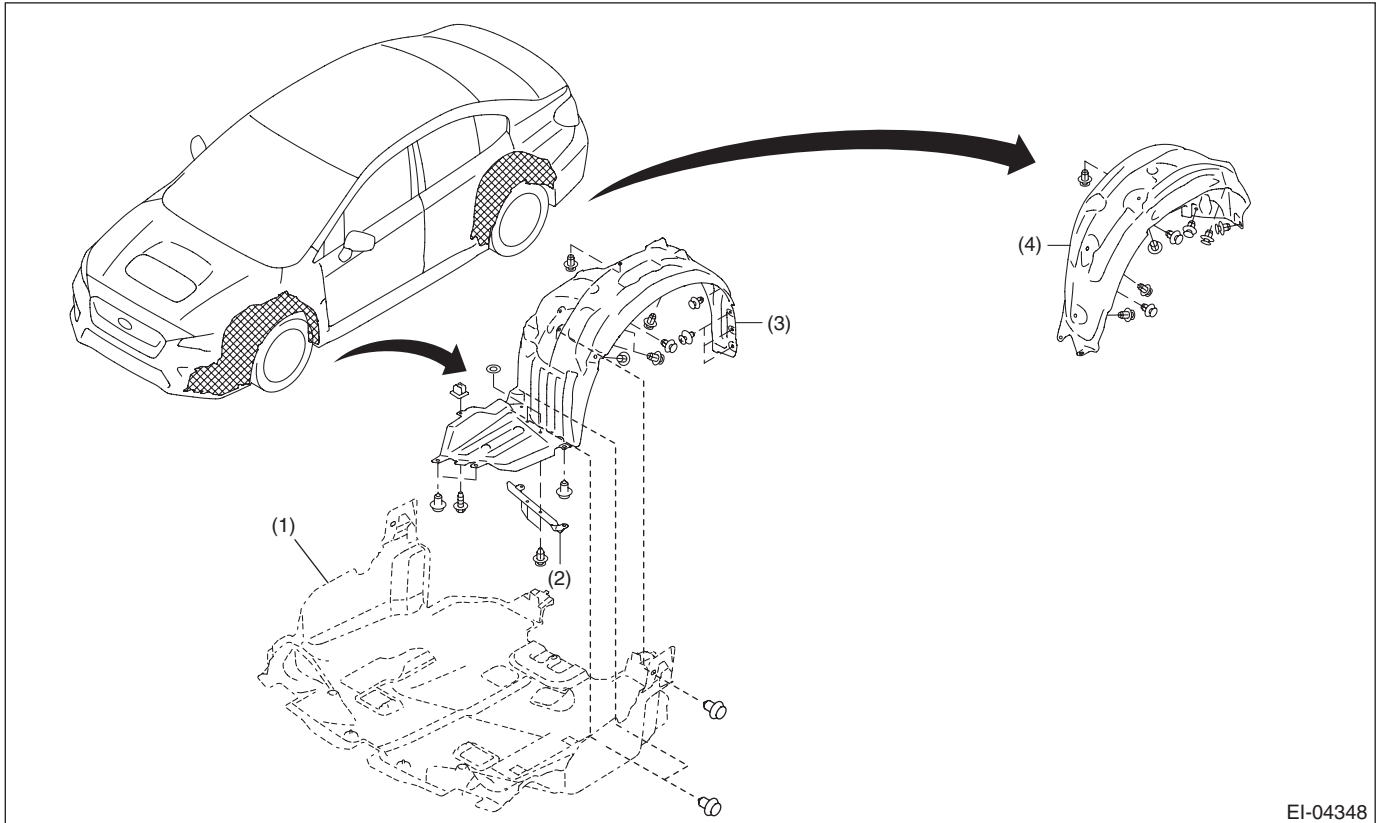


3. Mud Guard

A: REMOVAL

- 1) Lift up the vehicle.
- 2) Remove the wheels.
- 3) Remove the screws and clips to remove the mud guard.



EI-04348

- (1) Under cover - front
(2) Cover - fender LWR

- (3) Mud guard - front

- (4) Mud guard - rear

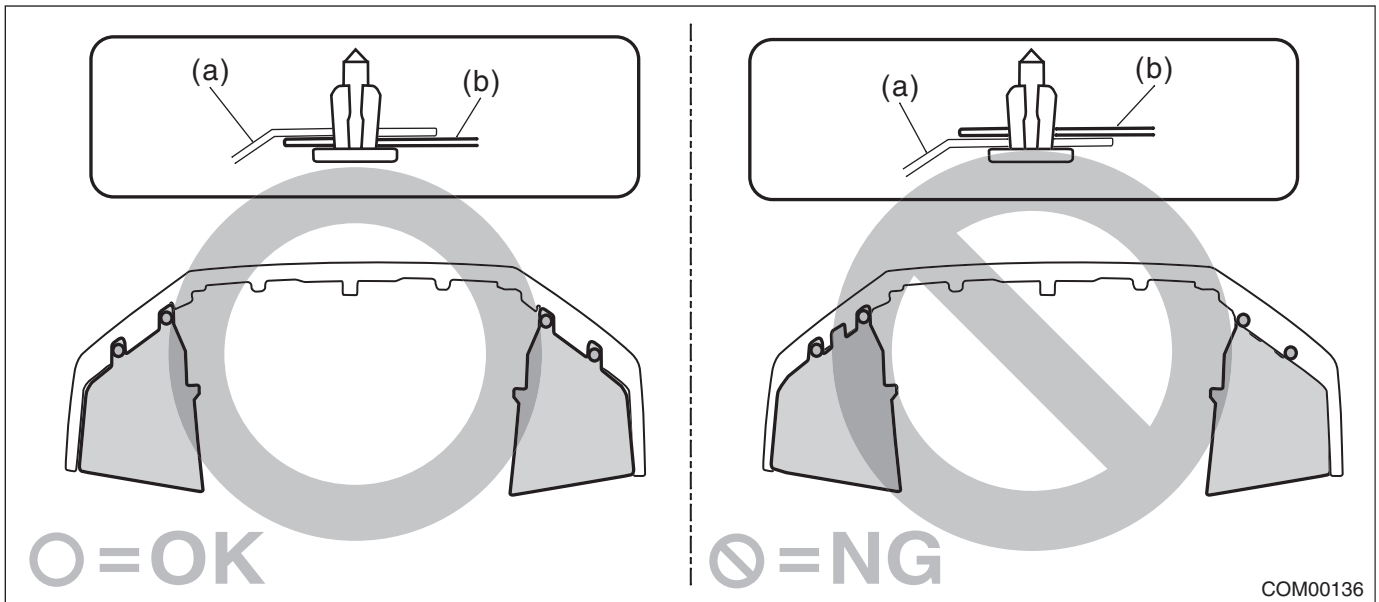
Mud Guard

EXTERIOR/INTERIOR TRIM

B: INSTALLATION

CAUTION:

Install the mud guard - front so that the front end of the mud guard (b) comes outside the bumper face - front (a).



- 1) Install the mud guard - front.
- 2) Install the wheel.

Tightening torque:

Wheel nut: 120 N·m (12.2 kgf-m, 88.5 ft-lb)

- 3) Lower the vehicle.